

Go Abroad

Study trip & practical internship:
Possibilities - Organisation - Funding

Anke Schürer

Faculty for Biology & Psychology

Where to find more information

<https://uni-goettingen.de/de/677597.html>

GA GEORG-AUGUST-UNIVERSITÄT
GÖTTINGEN

Fakultät für Biologie und Psychologie

FAKULTÄT STUDIUM PROMOTION INSTITUTE & ZENTREN **INTERNATIONAL** SERVICE

INTERNATIONAL **OUTGOING** - EXPLORE THE WORLD FROM GÖTTINGEN

SUCHEN ENGLISH

Outgoing - Explore the World from Göttingen

Welcome to our website, dedicated to the enriching world of international experiences! Immerse yourself in the thrill of exploring new cultures, embracing diversity, and stepping out of your comfort zone as you embark on an unforgettable journey.

Whether you choose Erasmus+, the Global Exchange Program, or seek thrilling internships abroad, the benefits of these experiences are boundless. Picture yourself wandering through vibrant city streets, savoring exotic flavors, and forging lifelong connections with people from different corners of the world. Not only will you expand your academic horizons, but you'll also cultivate a profound sense of global awareness and intercultural competence. Embrace the journey, seize the moment, and let the world become your most captivating teacher!

First information

- › [Informative event "Go Abroad" November 2023 \(pdf\)](#)

Next information meeting: Nov 15th 2023

- › [Informative event "Erasmus+ programme Biology" December 2022 \(pdf\)](#)

Next information meeting: Dec 13th 2023

- › [Informative events by Göttingen International](#)

Studies abroad

- › [Erasmus+ Programme Biology](#)
- › [Erasmus+ Programme Psychology](#)
- › [Global Exchange Programme](#)
- › [liveSciences Exchange Possibilities](#)

Internships abroad

- › [Self-organised placements](#)
- › [Organised placements](#)
- › [Funding and general information](#)

Useful information

- › [A-Z of Planning a Stay Abroad](#)
- › [Academic Recognition](#)
- › [Insurance](#)
- › [Leave of Absence](#)

GET OUT?!

Bringing international experience into your studies

Get to know
other countries
and customs

Study subjects not
offered in Göttingen

Fill transition
term (between
Bachelor/Master
or Master/PhD)

Recognition for
master application in
Göttingen (biology)

I simply want to
leave Göttingen.

For personal
growth and social
competence

Upgrade the CV!

Overview

1. General considerations

2. Study abroad

Erasmus/ Global Exchange Programme / lifeScience / self-organised

Funding/ Recognition

3. Internship abroad

With organisation/ self-organised

Funding/ Recognition

4. Prepare your stay abroad

Go abroad – general considerations

Preparation time: ca. 8 – 12 months

- Find a place to study/for internship (supervision)
- Find funding - deadlines for scholarships
- Language skills, visa, vaccinations, etc.
- Find housing

When: not before 3rd study semester

Duration: study -> min. 1 – max. 2 semester*

internship -> min. 6 weeks – max. 1 year

* two semester → academic year only (start in autumn term)

Go abroad – general considerations

Leave of absence at the University in Göttingen (Urlaubssemester)

Pro: semester does not count as study semester

Contra: you cannot take new courses in Göttingen (e.g. block courses or language intensive courses in Feb/Mar or Aug/Sept)

- send application directly to Office of Student Affairs Göttingen
→ www.uni-goettingen.de/en/52008.html

Have in mind...

- plan your complete studies at home (-> programme coordinator)
- extension of your studies is possible
- enrolment at Göttingen University necessary
- mandatory courses? (e.g. B.Bio.190.1 for BSc Biology)
- language requirements

Possibilities to go abroad

| | |
|------------------------------------|--|
| Study (exchange student) | within Europe -> Erasmus+ SMS |
| | worldwide -> Global Exchange Programme |
| | self-organised |
| Internship | with organisation |
| | self-organised |

Possibilities to go abroad

| | |
|------------------------------------|--|
| Study (exchange student) | within Europe -> Erasmus+ SMS |
| | worldwide -> Global Exchange Programme |
| | self-organised |
| Internship | with organisation |
| | self-organised |

Erasmus programme

- Each study field has its own contract (Bio und Psy separately)
- Duration of stay: 1 or 2 semester
 - exemption of tuition fees
 - administrative support
- Inform yourself about:
 - Language requirements
 - Study possibilities (courses, prerequisites, bachelor/master level)
 - Semester dates (examination period in Göttingen)
- **NO** funding
- Application for funding included
- Application deadline: **31.01.** (for WiSe 24/25 or/and SoSe 25)

Psychology - Erasmus+ SMS universities

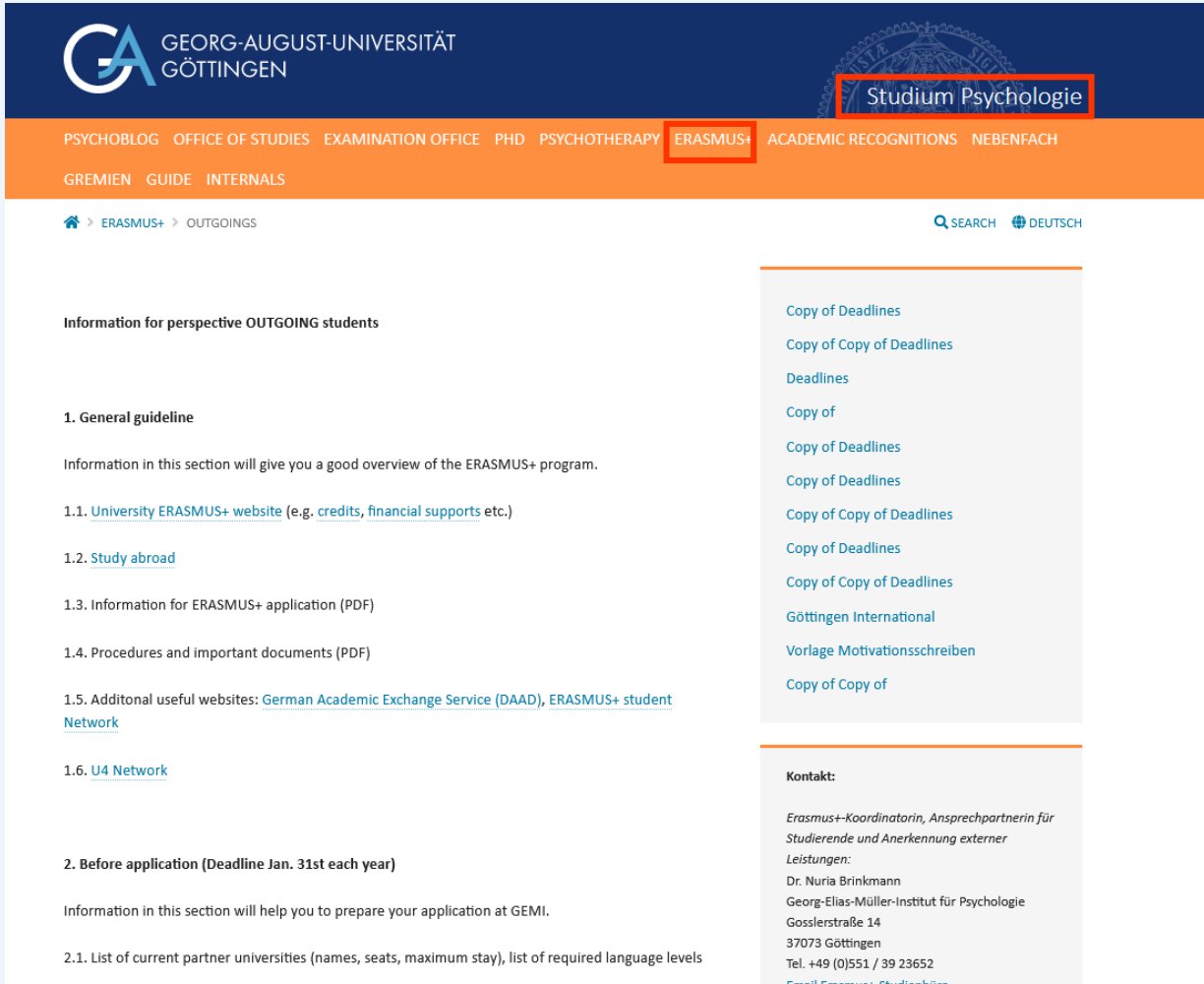
- Aarhus
- Ankara
- Bergen
- Bern
- Budapest
- Granada
- Istanbul
- Krakow
- Madrid
- Montpellier
- Nantes
- Neuchatel
- Padua
- Poznan
- Rome
- Salamanca
- Sevilla
- Torun
- Toulouse
- Valencia
- Zurich



Please note language requirements
(B1 in language of instruction)

Information: Psychologie > Erasmus

<https://uni-goettingen.de/en/outgoings/627581.html>



The screenshot shows the website for the Erasmus+ program at the Faculty of Biology & Psychology. The header includes the university logo and navigation links. The main content area is titled 'Information for perspective OUTGOING students' and is divided into two main sections: '1. General guideline' and '2. Before application (Deadline Jan. 31st each year)'. A sidebar on the right contains a list of links related to deadlines and application documents. The contact information for the Erasmus+ coordinator is provided at the bottom right.

GEORG-AUGUST-UNIVERSITÄT GÖTTINGEN

PSYCHOBLOG OFFICE OF STUDIES EXAMINATION OFFICE PHD PSYCHOTHERAPY **ERASMUS+** ACADEMIC RECOGNITIONS NEBENFACH

GREMIEN GUIDE INTERNALS

ERASMUS+ > OUTGOINGS

SEARCH DEUTSCH

Information for perspective OUTGOING students

1. General guideline

Information in this section will give you a good overview of the ERASMUS+ program.

- 1.1. [University ERASMUS+ website](#) (e.g. [credits](#), [financial supports](#) etc.)
- 1.2. [Study abroad](#)
- 1.3. Information for ERASMUS+ application (PDF)
- 1.4. Procedures and important documents (PDF)
- 1.5. Additional useful websites: [German Academic Exchange Service \(DAAD\)](#), [ERASMUS+ student Network](#)
- 1.6. [U4 Network](#)

2. Before application (Deadline Jan. 31st each year)

Information in this section will help you to prepare your application at GEMI.

- 2.1. List of current partner universities (names, seats, maximum stay), list of required language levels

Copy of Deadlines

Copy of Copy of Deadlines

Deadlines

Copy of

Copy of Deadlines

Copy of Deadlines

Copy of Copy of Deadlines

Copy of Deadlines

Copy of Copy of Deadlines

Göttingen International

Vorlage Motivationsschreiben

Copy of Copy of

Kontakt:

Erasmus+-Kordinatorin, Ansprechpartnerin für Studierende und Anerkennung externer Leistungen:

Dr. Nuria Brinkmann
Georg-Elias-Müller-Institut für Psychologie
Gosslerstraße 14
37073 Göttingen
Tel. +49 (0)551 / 39 23652
[Email Erasmus+-Studienbüro](#)

Biology - Erasmus+ SMS universities

- | | |
|-------------|-----------|
| Aarhus | Rennes |
| Åbo (Turku) | Rome |
| Barcelona | Rotterdam |
| Bern | Rouen |
| Bilbao | Salamanca |
| Wroclaw | Tallinn |
| Budweis | Turku |
| Ghent | Umeå |
| Gothenburg | Valencia |
| Grenoble | Vienna |
| Groningen | Warsaw |
| Helsinki | Zurich |
| Kalmar | |
| Krakow | |
| La Réunion | |
| León | |
| Leuven | |
| Leiden | |
| Lund | |
| Madrid | |
| Murcia | |
| Oulu | |
| Poznan | |
| Prague | |



Information: Biologie → International

www.uni-goettingen.de/en/677598.html


FAKULTÄT
STUDIUM
PROMOTION
INSTITUTE & ZENTREN
INTERNATIONAL
SERVICE

🏠 > INTERNATIONAL > ERASMUS+ BIOLOGY
🔍 SUCHEN 🌐 ENGLISH

Erasmus+ Biology

Through the EU programme Erasmus+, students have the opportunity to pursue their studies at partner universities across Europe. Bilateral agreements between the Faculty of Biology and Psychology and partner faculties ensure subject-specific courses aligned with students' interests. An extensive list of our partner universities in the field of Biology can be found under "Partner universities Biology". Whether for a semester or a year, Erasmus+ offers flexible durations.

Erasmus+ encompasses a range of additional benefits to support students throughout their exchange journey. Assistance is provided to guide students through the necessary formalities of the application and enrollment process. Furthermore, students enrolled in the programme can enjoy the advantage of not having to pay tuition fees at the partner university and financial support is available to assist students in covering travel expenses. Moreover, earned credits are recognized by the home university, integrating the experience into the academic curriculum.



- › [Partner universities Biology and field reports](#)
- › [Application at Göttingen University](#)
- › [Application at Partner University](#)
- › [At the Partner University and after you stay](#)

Contact

| | | |
|--|--|---|
| <p>Faculty of Biology and Psychology Wilhelm-Weber-Str. 2 37073 Göttingen</p> | <p>Departmental Coordinator Biology <i>For subject-specific questions</i> Anke Schürer (she/her) erasbio@biologie.uni-goettingen.de <i>Advisorv Service</i></p> | <p>Göttingen International <i>For general questions</i> Erasmus+ Team erasmus@uni-goettingen.de <i>Information about Erasmus+ and Contact</i></p> |
|--|--|---|

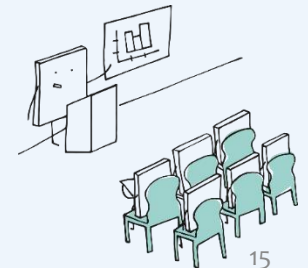
Informational meetings – Erasmus+

Psychology

04.12.23 8:15 ZHG003
(Brinkmann)

Biology

13.12.23 12:00 MN34
(Schürer)



Possibilities to go abroad

| | |
|------------------------------------|--|
| Study (exchange student) | within Europe -> Erasmus+ SMS |
| | worldwide -> Global Exchange Programme |
| | self-organised |
| Internship | with organisation |
| | self-organised |

Global Exchange Programme – Partner universities



Canada
USA
Mexico
Costa Rica

Colombia
Argentina
South Africa
Chile

Russia
Israel
India

China
Taiwan
South Korea

Australia
Mongolia
Japan

Global Exchange Programme (G.E.P.)

- Study at a partner university of Göttingen University
 - Duration of stay: 1 or 2 semester(s)
 - Exemption of tuition fees at the partner university
- Inform yourself about:
 - Language requirements
 - Study possibilities (courses, prerequisites, bachelor/master level)
 - Semester dates (examination period in Göttingen)
 - Recognition
- **NO** funding included
- Consultation with G.E.P. team recommended to get information about university specifics in general

Global Exchange Programme - Application

- Deadlines:

01.12. for the following winter term / full year

01.06. for the following summer term

- Webpage “Göttingen International”:

www.uni-goettingen.de/en/186506.html

- Webpage Faculty:

www.uni-goettingen.de/de/677644.html

Particular for USA & Canada

- Application in **winter semester only** (regardless period of stay abroad)
- USA: connected with Teaching Assistant/Management of the German House (German as foreign language)
- Selection interviews: knowledge about the USA/Canada and Germany necessary!*
- Excellent study results required
- Financing: [Fulbright Grant](#) possible

Counselling – prior to application

Team at „Göttingen International“

www.uni-goettingen.de/en/602167.html

➤ General information on partner universities

Team at Office of Studies Biology & Psychology

<https://www.uni-goettingen.de/de/84567.html>

➤ study plan & recognition possibilities

Good to know: G.E.P. evaluation criteria

- Grade (35%)
- Motivation (35%)
 - university (modules/courses), country, match with previous studies and future goals
- language knowledge & others (20%)
 - language of instruction and of the country
 - further preparation(s) e.g. INDIGU
- Further commitment (10%)
 - any kind of voluntary engagement → **PROOF NECESSARY**

University-wide place assignment -> end of January

G.E.P. - Timeline

| | | | |
|---|-----------------|--------------------------------|--------------|
| Study abroad in the following winter semester or full academic year | | | |
| 1 Dec. | mid Dec. | mid Jan. | begin Feb. |
| application | faculty ranking | selection (university-wide) | acceptance |
| 1 June | late June | mid July | begin August |
| Study abroad in the following summer semester | | | |

Possibilities to go abroad

| | |
|------------------------------------|--|
| Study (exchange student) | within Europe -> Erasmus+ SMS |
| | worldwide -> Global Exchange Programme |
| | self-organised |
| Internship | with organisation |
| | self-organised |

Study abroad – “free mover”

Why:

- University/faculty has no contract with Uni Göttingen
- University offers courses, which are important for your professional career
- You wish to experience a specific foreign country/university

How:

- Get into contact with the respective university -> apply directly

Consider:

- Tuition fees at host university may apply
- Preparation time 9 - 12 months (funding, housing, travel, etc.)

Australia & New Zealand – Studies

<https://gostralia-gozealand.de/>

... support for organisation of a self-organised study visit in
Australia/New Zealand



Study options - Overview

| | Erasmus SMS | GEP | self- organised |
|---------------------------------|---|---|--------------------|
| Study | Partner faculty/ departement of biology | Partner universities | any option |
| Application deadline | 31.01. (WiSe and SoSe) | 1.12. (WiSe) 1.06. (Sose) | individual |
| Funding | maybe (depends on money available) | not included | no |
| Prerequisite | none consider language requirements | none consider language requirements | ? |
| Tuition fee | no | no | yes / ? |

Study abroad - financing options

- **„Auslands-BAföG“** (only study, only during standard period of study)
 - www.auslandsbafoeg.de
- **PROMOS**
 - suitable for G.E.P. and self-organised internship
 - see criteria on PROMOS slides
- **DAAD Scholarship** (for studies only)
 - Different deadlines depending on country
 - Find scholarship [online](#)
- **NAMASTE+**
 - Scholarship for partner institutions in India (G.E.P.)
- **Erasmus SMS scholarship** (linked to Erasmus study place)

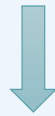


Recognition (Biology) – study abroad

Bachelor

Recognition as

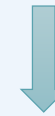
- Compulsory module: 😞
- Key competence module: 😊
- Selective compulsory module: ?/😊



Master

Recognition as

- *Coremodule*: 😞
- Key competence module (not graded): 😊
- Profile module (not graded): ?/😊



Contact the coordinator of your
 study programme
prior to your stay abroad

Recognition (Psychology) – study abroad

Bachelor

Master

Contact Dr. Nuria Brinkmann
prior to stay abroad

Possibilities to go abroad

| | |
|------------------------------------|--|
| Study (exchange student) | within Europe -> Erasmus+ SMS |
| | worldwide -> Global Exchange Programme |
| | self-organised |
| Internship | with organisation |
| | self-organised |

Placement abroad: with an organisation

- Supervised and organised placement (housing, social events...)
- Funding partly included
- You apply for a pre-existing place
- Several options [listed at website of GI](#)



www.iaeste.uni-goettingen.de/en/iaeste

- for natural scientists, placement usually during summer,
- application from Sept – Jan 15th
- being abroad: next summer (2 - 3 month)



www.aiesec.de/

- projects in sustainable development

Placement abroad: with an organisation



- research internships in science and engineering
- students at bachelor level only
- www.daad.de/rise/en/rise-worldwide/
- respect application deadlines

Carlo-Schmid-Programme

- www.daad.de/csp
- work in international administrations/organisations

Possibilities to go abroad

| | |
|------------------------------------|--|
| Study (exchange student) | within Europe -> Erasmus+ SMS |
| | worldwide -> Global Exchange Programme |
| | self-organised |
| Internship | with organisation |
| | self-organised |

Procedure: Placement “on my own”

Where do I want to go?

- country
- city
- field of interest
- institution (which academic institution or company)

How do I begin?

- research on the internet
- ask lecturers/supervisors for contacts
- read field reports

Getting in contact

- via e-mail
- address research group leader/person of interest
- short cover letter (purpose of your request, time window, motivation for exactly this institution/lab)
- duration: minimum 8 weeks (the longer the more attractive for the group)
- attachment: CV (studies, practical skills -> sell your knowledge)
 - > always approach several groups (about 50 % will not answer)
 - > after 14 days without answer re-send your request

... another option to reach your goal...

„Eines Abend sah ich mir eine dieser zahlreichen Sendungen über Naturschutzprojekte an, ...

... So befand ich mich zwei Tage - nachdem niedliche Tierchen im Fernsehen gezeigt wurden - in der Situation, völlig unvorbereitet ein Bewerbungsgespräch auf Englisch zu führen und zwar mit dem Direktor des Institutes* in Barcelona.“

(Excerpt from a field report, internship in Senegal)

* [Jane Goodall Institut in Westafrika]

Informational meeting – International Office

<https://www.uni-goettingen.de/en/137352.html>

Ways Abroad

Nov 15th (2 pm), Nov 24th (online)

Ways to an internship

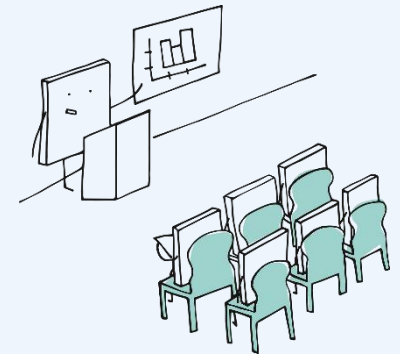
Nov 15th (4 pm)

Erasmus KA 131 & SEMP

Dec 20th

Erasmus KA 131 & SEMP application

Jan 9th & 23rd



Internship – financing options

- **Working E+xperience (KA131)**
- **PROMOS**



Working E+xpérience

- Self-organised internships **in Europe**
- Duration: 2 – 12 months
- Confirmation of internship required
- Recognition in study programme necessary
- Application deadlines:
 - latest **3 months prior** to the planned stay abroad

Information: <https://www.uni-goettingen.de/en/647465.html>

Contact : Patricia Missler („Göttingen International“)
Anke Schürer (signature on the LA/contract)

PROMOS

- Internships & and studies (e.g. G.E.P.) **outside Europe**
- Duration: 6 weeks – max. 6 months
- Confirmation of placement required with application
- Application deadlines:
 - 31 March (for stay past July 1st the same year)
 - 30 September (for stay past January 1st the following year)
- Funding rate: approx. 20 %

Information: www.uni-goettingen.de/en/164293.html

PROMOS – Evaluation criteria

- Grade (30 %)
- Letter of motivation (30 %)
- Internationalisation strategy of the faculty (40 %)

[https://www.uni-goettingen.de/de/document/download/3d170847403c8a458efa803ea2fe86cb-en.pdf/Bewertungskriterien%20Internationalisierungsstrategie%20der%20Fakul%C3%A4ten%20\(Stand%2005%202022\).pdf](https://www.uni-goettingen.de/de/document/download/3d170847403c8a458efa803ea2fe86cb-en.pdf/Bewertungskriterien%20Internationalisierungsstrategie%20der%20Fakul%C3%A4ten%20(Stand%2005%202022).pdf)

- Thesis, self-organised -> Bio
- Research project, self-organised (recognition possible)
- Study abroad, self-organised (recognition possible)
- Study abroad with partner institution (e.g. G.E.P.) -> Psy
- Research project, self-organised (no recognition possible)
- Summer/Winter school
- Short time stay (e.g. for learning a specific method)
- Language course

Further funding possibilities

Bildungskredit

➤ www.bildungskredit.de

Parent-independent and non-income-related

Have a job and save money

- Student assistant job at Uni Göttingen

➤ www.stellenwerk-goettingen.de/en/startseite-gottingen

- Unsolicited application to research institutes (e.g. MPI)

- Work/job during time between terms

Ask grandparents, parents, have a rich aunt & uncle ...

Further funding possibilities

Scholarship → databases

- www.daad.de/ausland/studieren/stipendium/de/70-stipendien-finden-und-bewerben
- www.scholarshipportal.com

Foundations

- for your studies in general (grant for stay abroad often included)
- Prerequisites: Outstanding study performance
Social engagement (depends on the foundation)
- www.stiftungsindex.de -> keyword *Natural sciences*
- www.bmbf.de/de/die-begabtenfoerderungswerke-884.html

Example: Studienstiftung des Deutschen Volkes

- www.uni-goettingen.de/en/54057.html
- Self-nomination possible

Recognition (Bio + Psy) – Internship abroad

- Recognition as module for curriculum **not recommended**

- Your effort not visible on a one page transcript
- Get in touch with coordinator of your study programme

-> ask for a ***letter of recommendation*** from hosting institution

(this strengthens your CV most)

What else..

- study place / place for internship
- Funding
- (Sub)lease your apartment <https://www.uni-goettingen.de/en/618501.html>
- Housing (ask hosting institution for help and/or funding)
- Travel planning
- Insurances (health, accident, third party insurance)
- Vaccinations
- Visa
- Language & “Country codes”

Preparation – Language & Culture

Language of instruction (& country)

- common languages: ZESS www.uni-goettingen.de/en/423445.html
- rare languages: Seminars of the faculty of Philosophy
- Adult education centre (VHS) www.vhs-goettingen.de
- use institutions throughout Germany

- **InDiGU** www.uni-goettingen.de/en/108275.html
 - Support of students from abroad (Study Buddy programme, subject specific (writing) partnerships, language tandem learning, ...)
 - Get a certificate: “Internationales” (ECTS)

Foyer International www.uni-goettingen.de/en/2554.html

- Garden Workshop, Theatre Workshop, This & That Tuesday, ...

Further Questions?

General Questions: Anke Schürer

E-Mail: erasbio@biologie.uni-goettingen.de

Advisory service: <https://www.uni-goettingen.de/de/84567.html>

Erasmus Biology: Anke Schürer

see above

Erasmus Psychology: Nuria Brinkmann

E-Mail: erasmus@psych.uni-goettingen.de

Advisory Service: <https://www.uni-goettingen.de/de/104814.html>



RAUS HIER?!
Auslandserfahrung ins Studium bringen

Good luck organising
your time abroad!